

Dear Guests,

Welcome! We are happy to have you with us. We hope you are enjoying a pleasant stay. Please note that camping outside the designated areas is not permitted in the municipality of Kandersteg.

In addition, every overnight stay of natural persons, without tax residence in the municipality of Kandersteg, is subject to pay tourist taxes. Accordingly, we ask you to pay the tourist taxes at the Tourist Center:

Tourist Center Kandersteg
Äussere Dorfstrasse 26, 3718 Kandersteg
info@kandersteg.ch Tel.: + 41 33 675 80 80

Kandersteg has also experienced a camping boom, partly due to the Corona situation, which is why the municipality is working to regulate all aspects of camping in the municipality area and to create alternatives (parking spaces among others).

Until then, we ask you to refrain from camping outside the designated areas, to protect nature and animals among others.

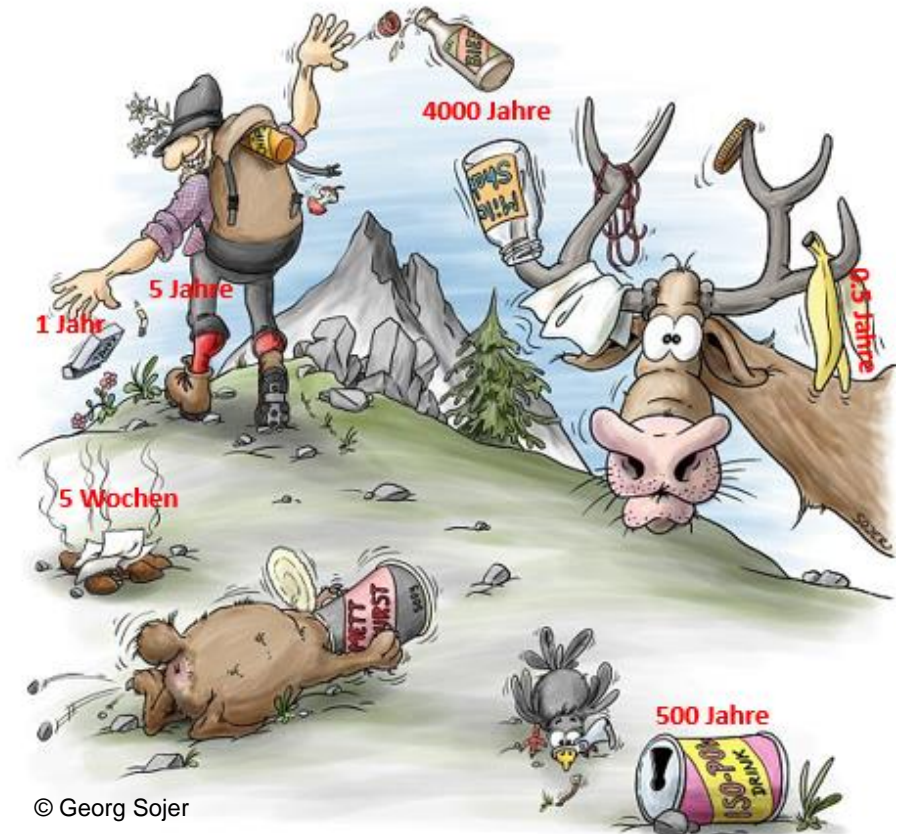
In Kandersteg the following possibilities are at your disposal:

Camping Rendez-Vous
Hubleweg, 3718 Kandersteg
info@camping-kandersteg.ch, Tel.: +41 33 675 15 34

Nationales Nordisches Skizentrum Kandersteg
Swisscom Nordic Arena, Büelweg 20, 3718 Kandersteg
welcomen@nordicarena.ch, Tel.: +41 33 675 80 90

Luftseilbahn Kandersteg-Allmenalp AG
Allmenbahnstrasse 23, 3718 Kandersteg
info@allmenalp.ch, Tel.: +41 33 675 16 90

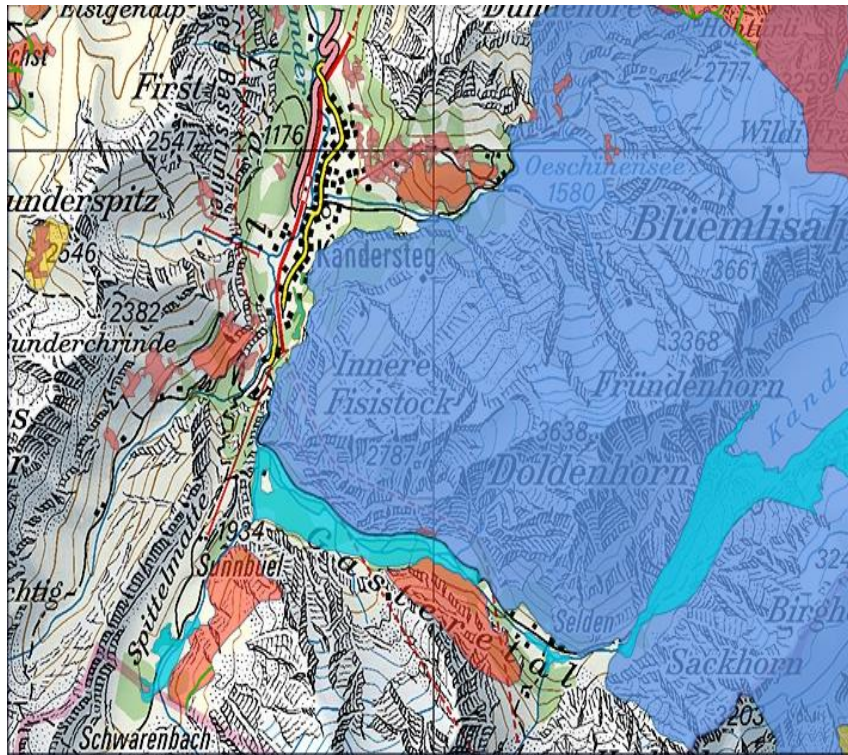
Luftseilbahn Kandersteg-Sunnbüel AG
3718 Kandersteg
info@sunnbuel.ch, Tel.: +41 33 675 81 41



© Georg Sojer

Protection of nature and wildlife

The decomposition time of waste can take from a few weeks to several thousand years. As a result, the soil or water is polluted with pesticides, microplastics and harmful chemicals. We therefore ask you to always take your waste home and to dispose it according to the principle of waste separation. In this way, you are not only doing something good for the environment, but also for yourself and future generations.



UNESCO-Welterbe Naturstätten

■ UNESCO Welterbe Naturstätten

Nationalpark

■ Schweizerischer Nationalpark

Wildruhezonen

Wildruhezone Routennetz

— Erlaubter Weg / Route

— (i) — Weg / Route mit Einschränkung

Wildruhezone

■ rechtsverbindlich

■ empfohlen

Flachmoore

■ Flachmoore

Auengebiete

■ Auenfläche

Trockenwiesen und -weiden (TWW)

■ Trockenwiesen und -weiden

Wildtierschutzgebiete

Eidg. Wildtierschutzgebiet Routennetz

— Erlaubter Weg / Route

— (i) — Weg / Route mit Einschränkung

— Skilift und Luftseilbahn

Eidg. Wildtierschutzgebiet

■ rechtsverbindlich



Dear Guests,

We are happy to have
you with us.

However, please note...